



Economia, Finanza e Analisi dei Dati

Laurea Magistrale

Data Analysis for Economics

Topics in Economics That Don't Seem Like It

Marco Nieddu

Fall 2025

Local Saints and Holidays

- ▶ The goal today is to build a dataset that includes the local (religious) holiday for each municipality in Sardinia.
- ▶ Steps:
 1. Identify a data source that includes this information (Wikipedia).
 - ▶ For instance, see the *giorno festivo* for Berchiddeddu:
<https://it.wikipedia.org/wiki/Berchiddeddu>
 2. Write a script that extracts information from a single webpage.
 3. Find a list of all Sardinian municipalities (with the link to their Wiki webpage) and store the links in a dataframe.
 4. Write a script that goes through each link in the dataframe and collects the information on the local holiday.

Why?

- ▶ These data can be used (and have actually been used) to address many different **economic** questions.
 - ▶ The impact of religious celebrations on economic development.
 - ▶ Montero, Eduardo, and Dean Yang. "Religious festivals and economic development: Evidence from the timing of Mexican saint day festivals." *American Economic Review* 112.10 (2022): 3176–3214.
 - ▶ Related papers also study the impact of Ramadan on economic growth and happiness.

Culture and identity in Economics

- ▶ More broadly, a growing literature emphasizes the role of **culture, identity, and geography** in shaping long-run economic and political outcomes:
 - ▶ **Squicciarini (2020)** shows that in nineteenth-century France, regions with stronger *religiosity* invested less in secular education and industrialization, slowing economic progress
 - ▶ **Bazzi and Gudgeon (2021)** document how *colonial borders* that divided ethnic groups across countries deepened political fragmentation and conflict in Africa, with persistent developmental consequences.
 - ▶ **McGuirk and Nunn (2023)** show that *climate change and rainfall variability* increased conflict in regions dependent on transhumant pastoralism in

Religious holidays in Mexico

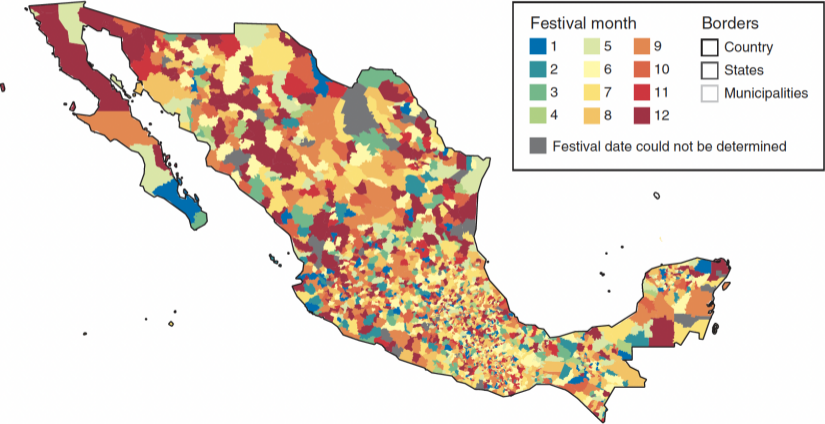


FIGURE 1. SAINT DAY FESTIVAL MONTHS: ALL OF MEXICO

When religious holidays coincide with the harvesting season

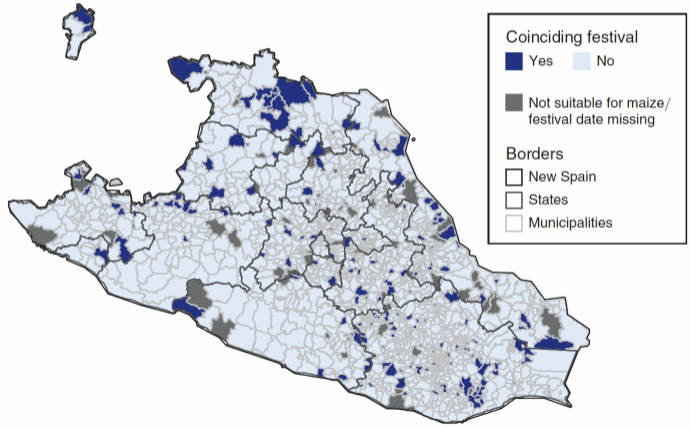


FIGURE 3. AGRICULTURALLY COINCIDING FESTIVALS: NEW SPAIN REGION OF MEXICO

Holidays and economic development

TABLE 2—IMPACT OF AGRICULTURALLY COINCIDING FESTIVALS ON DEVELOPMENT OUTCOMES

	(1)	(2)	(3)	(4)	(5)
<i>Panel A. Log household income</i>					
Festival coincides with maize planting or harvest	-0.275 (0.099) [0.107]	-0.204 (0.080) [0.080]	-0.251 (0.071) [0.082]	-0.255 (0.070) [0.079]	-0.206 (0.077) [0.075]
State fixed effects	N	Y	Y	Y	Y
Geography controls	N	N	Y	Y	Y
Colonial controls	N	N	N	Y	Y
Planting-month fixed effects	N	N	N	N	Y
Harvest-month fixed effects	N	N	N	N	Y
Festival-week fixed effects	N	N	N	N	Y
Observations	1,593	1,593	1,593	1,593	1,593
Adjusted R^2	0.004	0.347	0.538	0.543	0.567
Mean dependent variable	3.234	3.234	3.234	3.234	3.234
Standard deviation dependent variable	1.330	1.330	1.330	1.330	1.330
<i>Panel B. Index of economic development</i>					
Festival coincides with maize planting or harvest	-0.695 (0.300) [0.342]	-0.422 (0.240) [0.252]	-0.593 (0.209) [0.226]	-0.613 (0.208) [0.220]	-0.537 (0.224) [0.190]
State fixed effects	N	Y	Y	Y	Y
Geography controls	N	N	Y	Y	Y
Colonial controls	N	N	N	Y	Y
Planting-month fixed effects	N	N	N	N	Y
Harvest-month fixed effects	N	N	N	N	Y
Festival-week fixed effects	N	N	N	N	Y
Observations	1,593	1,593	1,593	1,593	1,593
Adjusted R^2	0.002	0.348	0.566	0.572	0.597
Mean dependent variable	-0.589	-0.589	-0.589	-0.589	-0.589
Standard deviation dependent variable	4.039	4.039	4.039	4.039	4.039